

Rooted in

heritage



EQUINOX

**Emerald**

CHOICEST HERITAGE HOMES

Just 2 mins from Shyambazar crossing



# Shyambazar

Historically, Shyambazar in North Kolkata is popular for being a vibrant epicenter of traditional Bengali culture, a crucial commercial hub, and a landmark of colonial-era heritage. The terrain offers a distinct "old-world charm" that persists alongside modern city life. Its enduring popularity is rooted in its role as a bustling shopping, dining, and cultural destination, often centered around the iconic Five-Point Crossing (*Panch Matha More*).



Welcome to Equinox Emerald. Here every home reminds you of living in a place of your dreams. Where each apartment is enshrined in a cross-ventilated and space-efficient landscape. The location has very close proximity to the Metro, markets, malls, educational institutions & healthpoints. Deshbandhu Park, the green lungs of North Kolkata is just 5 mins away. Live in peace in a heritage terrain.



## The Heritage Terrain



EQUINOX  
**Emerald**  
CHOICEST HERITAGE HOMES

**LIVE**



In a well connected upscale neighbourhood.

**WORK**



Close proximity to the Central Business District.

**LEARN**



Close to World Class Education Institutes.

**PLAY**



Close to multiple Parks & Recreation zones.

**Heritage Facade | 2 & 3 BHK Homes | Honest Price**

# SHINE on

A divine embrace of tradition inspired by legacy awaits you.

Come be a part of a heritage high. Shine on and live rich.

Due to a scarcity of land parcels, people who have historically stayed.

In this area have not enjoyed a modern and upgraded lifestyle. Not anymore! Welcome to Emerald. Here moments will become memories and vision will turn to values.

*Be a part of it.*

## Facilities:

Classic State-of-the-art Elevation | Vaastu friendly apartments  
| Prime location with all round connectivity | 24x7 CCTV  
Surveillance | Intercom | Semi Automatic Elevator\*  
| Decorated Rooftop

*\*Conditions apply.*

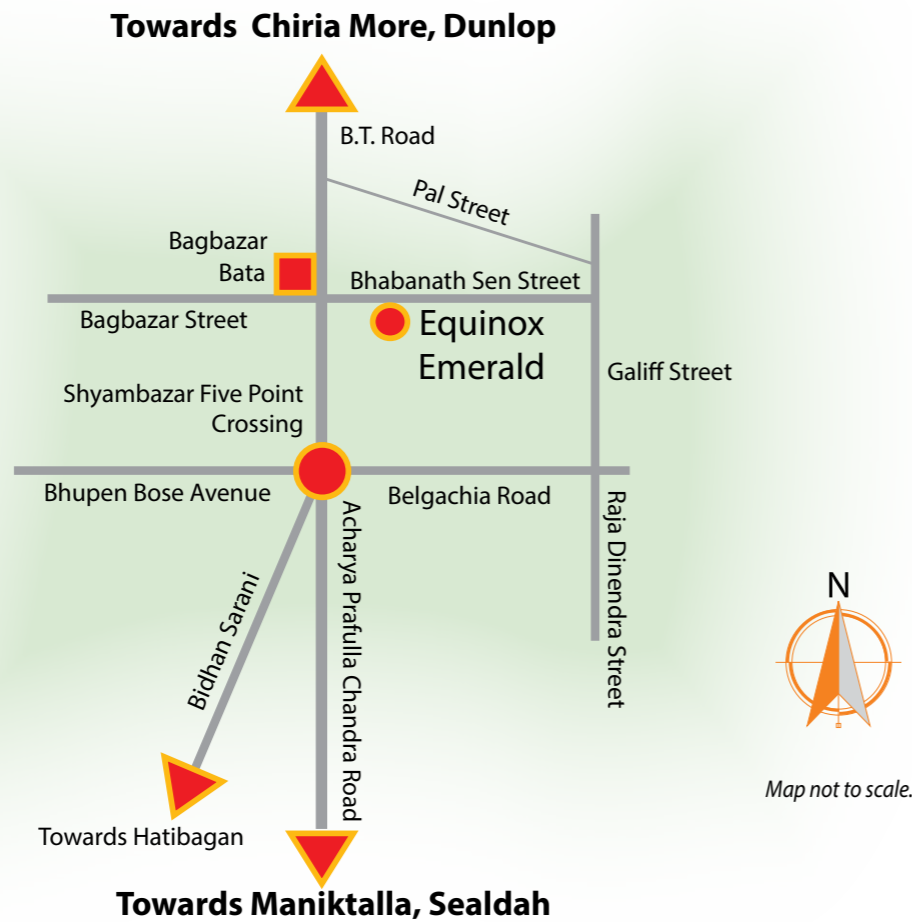
**Right Investment**  
**Right Location**  
**Right Price**

  
EQUINOX  
**Emerald**  
CHOICEST HERITAGE HOMES



 Equinox Emerald: Grand day view – an Artist's impression

# Location Map



**Site Address:** 8B, Bhabanath Sen Street, Kolkata-700004

### Education Institutes

Manindra College - 5 mins  
 Scottish Church - 10 mins  
 Bethune School - 12 mins  
 Nopani School - 15 mins  
 Calcutta University - 20 mins

### Shopping & Entertainment

Hatibagan Market - 5 mins  
 Star Theater - 6 mins  
 Hind Inox - 15 mins  
 New Market - 28 mins

### Medical Facility

R G Kar Medical Col. - 5 mins  
 Capitol Nursing Home - 12 mins  
 National Medical Col. - 15 mins  
 Islamia Hospital - 17 mins  
 AMRI Salt lake - 23 mins

### Famous Eateries & Sweet Shops

Gol Bari - 5 mins  
 Chittaranjan - 8 mins  
 Paramount - 10 mins  
 Girish Chandra & Nakur - 17 mins

# Project factsheet



- Name of the Project: Equinox Emerald
- Nearest landmark: Opposite Bagbazar Bata
- Developed by: Equinox
- Size of plot: 2185 sq.ft | 3 khatta 3 chataks
- Running frontage of land/plot: 39' 3"
- Width of the adjacent road: 40 ft.
- Total developed sq ft: 8482 sq.ft.
- No. of floors: G+4
- No of flats: 3 BHK - 4 nos. | 2 BHK - 4 nos.
- No. of provisional car parks: 2
- No. of 2 wheeler parks: 4
- Basic facilities: Lift/CCTV
- Special attraction: Heritage façade
- Rooftop facility: Decorated rooftop
- Current status: Construction initial work started
- Possession: December 2028

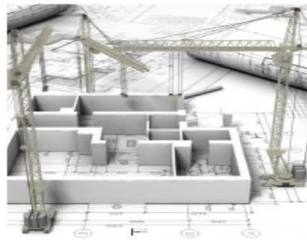
T & C apply.



# Project Specifications



**Foundation:**  
R.C.C. as per design



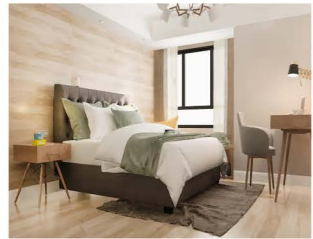
**Superstructure:**  
R.C.C. framed structure



**Wall:** Brick / AAC Block masonry



**Flooring:** Living & Dining – Vitrified tile finish



**Bedroom:** Vitrified tile finish



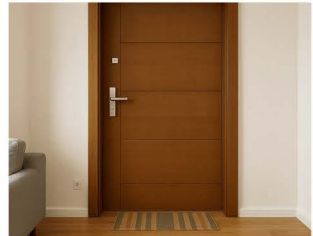
**Kitchen:** Vitrified tile finish, Granite counter, Stainless steel sink



**Designer tiles:** up to 2 ft dado above counter in kitchen



**Bathroom:** Anti-skid ceramic/rectified floor & Dado



**Doors:** Flush doors with wooden frames



**Windows:** Aluminum frame sliding/casement



**Internal Finish:** Putty finish over plaster on the walls and ceiling



**External Finish:** Weather resistant paint finish



**Electrical:** Concealed ISI wiring, Modular switches



**Air Conditioning:** Provision for Air Conditioning in all Units



**Sanitary:** High gloss ceramic fittings & C.P. Fixtures



**Plumbing:** U.P.V.C. plumbing pipes



**Lift:** Modern 3 Pax. Semi-automatic Elevator



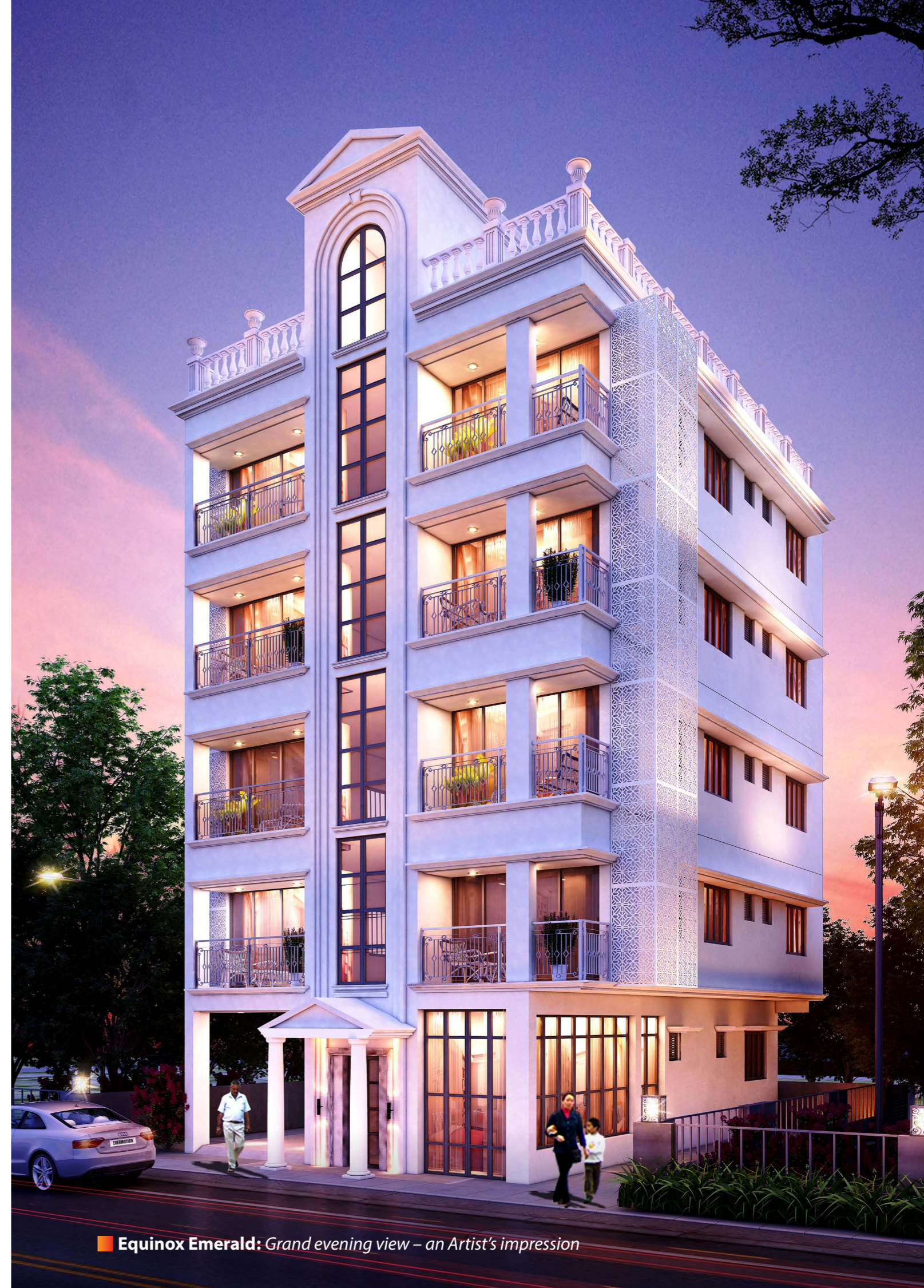
**Water Supply:** 24 hours water supply



**Anti-termite treatment:** At ground floor level



T & C apply.



**Equinox Emerald:** Grand evening view – an Artist's impression

# Typical floor Plan (1st to 4th)



## AREA STATEMENT

SL.NO.	FLAT TYPE	TOTAL NOS	FLAT	COVERED AREA (SQFT)	BUILT UP AREA(SQFT)	SUPER BUILTUP AREA (SQFT)
1	3BHK	4	A	629	720.00	900.00
2	2BHK	4	B	498	570.00	713.00

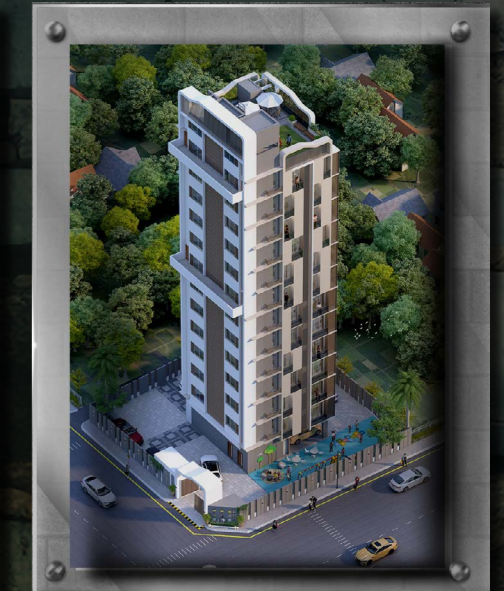
# Our Laurels and upcoming Landmarks



**Equinox Legacy**  
90B, Shyambazar Street



**Equinox Icon**  
87B, Shyambazar Street



**Equinox Pinnacle Heights**  
47, Pratapaditya Place



**Equinox Pearl**  
57, Mcleod Street



**Equinox Pristina**  
56, Parnasree Kolkata

Our commitment to creativity, functionality, and sustainability has earned us a reputation for excellence. We believe in transforming spaces into experiences.

Equinox Pristina has been envisioned keeping in mind some facets and aspects that are essential for a perfect bonding with Nature. With the changing lifestyle and aspirations of the people residing in Parnasree, gated lifestyle communities with modern facilities are in demand

Parnasree offers Metro connectivity all round greenery and high Community living standards. Equinox Pristina has limited edition boutique residences complete with all superior facilities. Come ... be a part of it.



**Site address:** 8B, Bhabanath Sen Street – Kolkata 700 004



**Corporate Office:** Equinox Legacy,  
90B, Shyambazar Street, Kolkata - 700 005  
[www.equinoxprojects.in](http://www.equinoxprojects.in)  
[contact@equinoxprojects.in](mailto:contact@equinoxprojects.in)

**SALES & MARKETING CONTACT NUMBERS:**

**9830013601, 9330614756**

**Disclaimer:** The information depicted herein viz., master plans, floor plans, furniture layout, fittings, illustrations, specifications, designs, dimensions, rendered views, amenities and facilities etc., are subject to change without notifications as may be required by the relevant authorities and cannot form part of an offer or a legal contract. Whilst every care is taken in providing this information, the Developer cannot be held liable for changes & variations.

