



RERA No. :
 WBRERA/P/KOL/2026/004245
<https://rera.wb.gov.in/>



Site address: 90B, Shyambazar Street – Kolkata 700 005

Project developed by :



Corporate Office : Equinox Legacy
 90B, Shyambazar Street, Kolkata - 700 005
www.equinoxprojects.in | contact@equinoxprojects.in

Disclaimer: The information depicted herein viz., master plans, floor plans, furniture layout, fittings, illustrations, specifications, designs, dimensions, rendered views, amenities and facilities etc., are subject to change without notifications as may be required by the relevant authorities and cannot form part of an offer or a legal contract. Whilst every care is taken in providing this information, the Developer cannot be held liable for changes & variations.

REFLECTIONS OF A BEAUTIFUL LIFE



Heritage Terrain | 2 & 3 BHK Homes | Honest Price

SMALL IS THE *New Big*



Enchant Your *Senses*

Equinox Legacy is a residential project offering pocket-friendly affordable luxury homes. With selectively designed apartments, our aim is to bring you closer to a living space that has all round connectivity.

Located away from the chaos of the city in the heart Sobhabazar and in close proximity to Sutanuti Metro Station, the Ganges and Hatibagan, Legacy is your ultimate dream Home.

The property will be equipped with round-the-clock security, KMC water facility and a host of choicest amenities to enable a hassle-free lifestyle.

Get ready to explore and experience an all-new life.



Smaller maintenance costs

Smaller community hence bigger bonding

Small hence greater privacy and share of voice

Smaller decision times spent on big issues

Smaller commuting time, almost everything is at an arms length

Smaller travel time to the nearest Metro Stations



Fact Sheet

Amenities at a Glance

- Façade with an Oriental look
- Balcony in all apartments
- All round connectivity
- 2 & 3 BHK Homes with flexible investment options
- Cross ventilated space-efficient apartments
- Decorated rooftop
- Friendly neighborhood
- 5 Pax semi-automatic modern elevator
- 3 mtr. wide internal driveway with beautification
- Wide and well-lit Lobby and Stairs
- Provision for 24 hr. water supply
- Home loans from leading Financial Institutions

- **Name of the project:** Equinox Legacy
- **Full address:** 90B Shyambazar Street, Kolkata - 700005
- **Nearest landmarks:** opp. Shyambazar A.V. School, near Sovabazar Metro
- **Developed by:** Equinox
- **Sales & Marketing contact numbers:** 9330614756/9830013601
- **Total size of land/plot:** 4 cottah 5 chitak 37 sq. ft.
- **Running frontage of the land /plot:** 32 ft.
- **Width of the adjacent approach road:** 31 ft.
- **Total developed sq ft:** 8950 sq. ft.
- **No. of floors:** 5
- **No of flats:** 3 BHK 4 nos. | 2 BHK 4 nos.
- **No. of car parks:** 4
- **Basic facilities:** Lift/Power back-up/CCTV surveillance
- **Rooftop facility:** Designed rooftop
- **Pricing:** Starting from Rs. 7500/- per sq.ft.
- **Current status:** Structural work in progress
- **Possession:** Oct 2026
- **Home loans:** available



RERA APPROVED



VAASTU-FRIENDLY CONSTRUCTION



CROSS VENTILATED HOMES



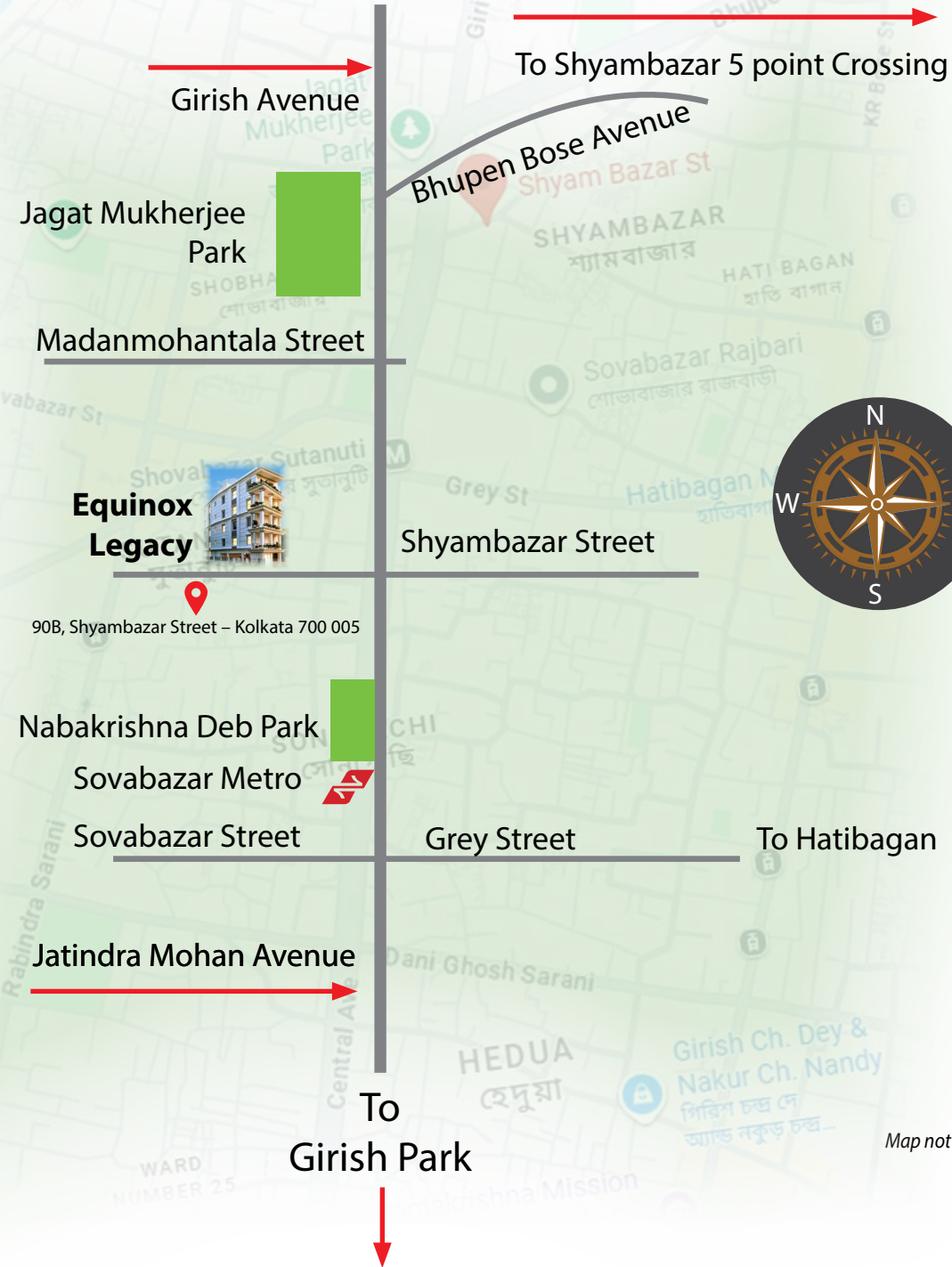
JUST 4 MINS FROM SOBHAVAZAR METRO



HOME LOANS FROM LEADING BANKS

Location *Map*

To Bagbazar, Galiff St.



Equinox Legacy
90B, Shyambazar Street – Kolkata 700 005

Map not to scale.

Education Institutes

- Manindra College – 5 mins
- Bethune School – 5 mins
- Nopani School – 6 mins
- Scottish Church – 6 mins
- Calcutta University – 7 mins

Medical Facility

- R G Kar Medical Col. – 7 mins
- National Medical Col. – 8 mins
- Capitol Nursing Home – 8 mins
- Islamia Hospital – 10 mins
- AMRI Salt lake – 23 mins

Shopping & Entertainment

- Hatibagan Market – 2 mins
- Star Theater – 3 mins
- Hind Inox – 14 mins
- New Market – 22 mins

Famous Eateries & Sweet Shops

- Gol Bari – 5 mins
- Paramount – 5 mins
- Chittaranjan – 6 mins
- Girish Chandra & Nakur – 7 mins

Equinox Legacy: Day view – An artist's impression



Construction Specifications

STRUCTURE

- FOUNDATION: Pile foundation.
- SUPER STRUCTURE: Earthquake resistant RCC framed structure.
- RMC: Ultratech / Nirman or equivalent ISI standard reputed brand.
- STEEL: SAIL / Vizag or ISI approved reputed brand.
- CEMENT: Ultratech / Ambuja or ISI approved reputed brand.
- WALLS: Red Brick / AAC Blocks



PAINTS & FINISH

Meticulously designed/planned modern elevation; to be externally painted with texture/ acrylic emulsion paint.



BATHROOM & TOILETS

- Anti-skid ceramic / vitrified floor tiles.
- In Toilets skirting Ceramic tiles on the walls up to door height.
- Standard fittings & fixtures Hindware or equivalent



KITCHEN

- Anti-skid Ceramic / Vitrified floor tiles.
- Granite top cooking platform with one Stainless Steel sink.
- Ceramic tiles dado upto 2ft from the platform.
- Provision for Exhaust fan / Chimney & Plug point



DOOR

- Flush doors with wooden frames.
- Lock: On main door only.



WINDOWS

- UPVC/ Aluminum (sliding casement).



ELECTRICAL

- Provision for Adequate Light, AC & Fan Points.
- Provision for Internet & TV in Living / Dining.
- Adequate Provision for 6 amp / 16 amp points.
- Concealed Copper Wiring with modular switches of reputed brand.



PLUMBING

- Sanitary & CP Fittings from reputed brand.
- Provision for Geyser in all the Toilets



ELEVATORS

- Lift (05 Passenger modern Lift of reputed Brand)



FIRE SAFETY

- As per recommendations of Fire Authorities



FLOORING

- BEDROOM & LIVING / DINING: Vitrified tiles
- FLOOR LOBBY: Marble / Vitrified tiles / engineered stone / Granite
- ENTRANCE LOBBY: Marble / Vitrified tiles / engineered stone / Granite
- STAIRCASE: Vitrified tiles / Stones / Granite / Kota
- VERANDAH / BALCONY: Anti-skid / Vitrified floor tiles.



WATERPROOFING

- Adequate Waterproofing will be done in required areas like Toilets & Kitchens



CAR PARKING

- Provision for Covered / Open Car Parking.



WATER SUPPLY

- Local Authority Supply from rooftop Tank



ANTI-TERMITE TREATMENT

- Anti-Termite Treatment will be done at Foundation & Ground floor level.



ROOF

- Adequate Waterproofing treatment at the rooftop level.



SECURITY & SAFETY

- CCTV in both blocks at required ground floor level common areas.
- Intercom in all Apartments and at Project Reception / Security
- 24x7 Manned Security.
- Modern Fire-fighting System.



POWER BACKUP

- Power Backup for common areas.
- Limited supply for flats.

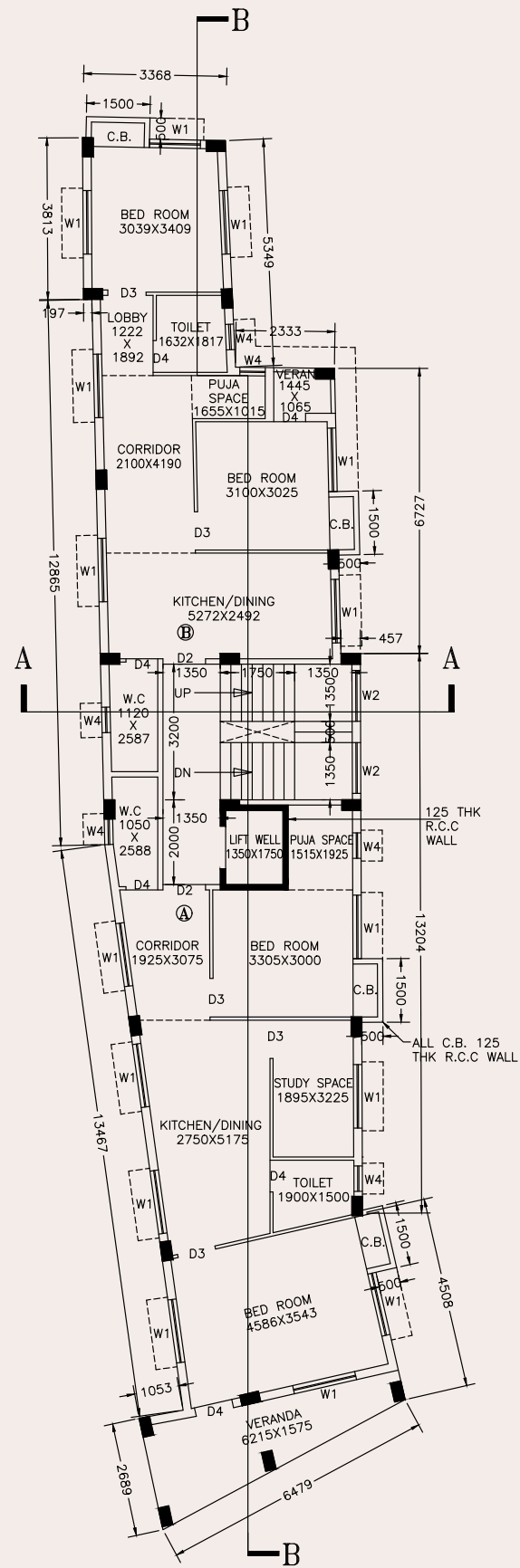


(T&C apply)



Plan

2nd Floor

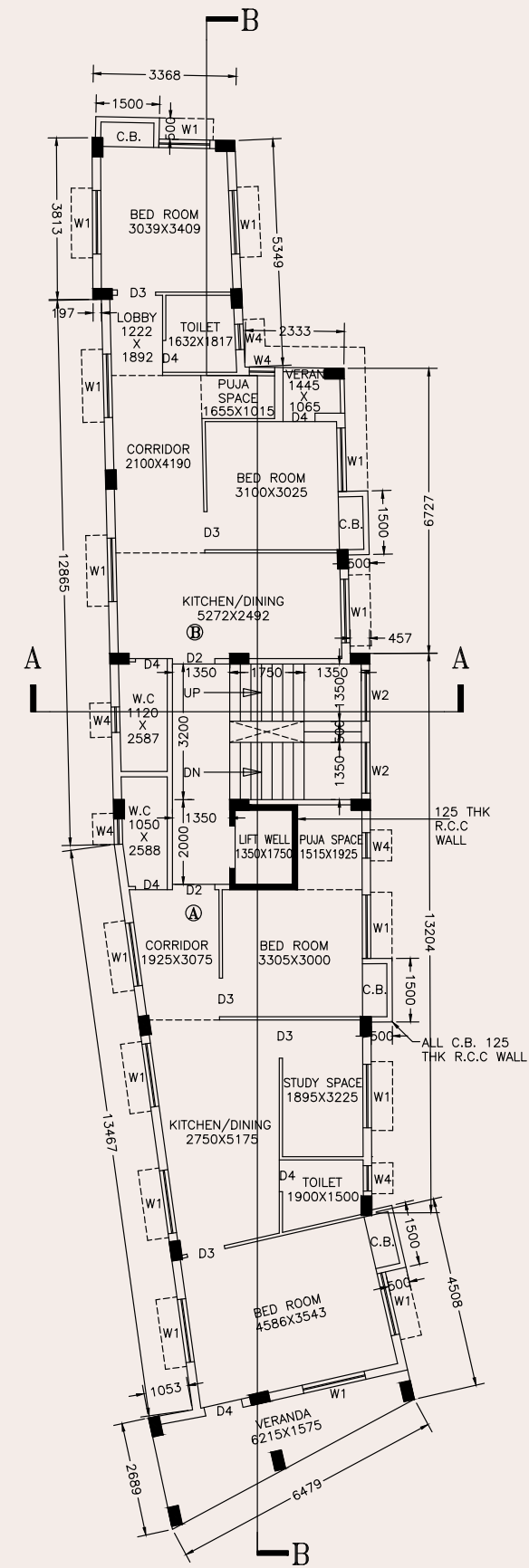


2nd Floor

Floor	TYPE	Built Up Area (sq. ft.)	Super Built Up Area (sq. ft.)
Flat 1	3 BHK	1010	1263
Flat 2	2BHK	778	973

Plan

3rd Floor



3rd Floor

Floor	TYPE	Built Up Area (sq. ft.)	Super Built Up Area (sq. ft.)
Flat 1	3 BHK	1010	1263
Flat 2	2BHK	778	973

Create perfect family moments.
Everyday!



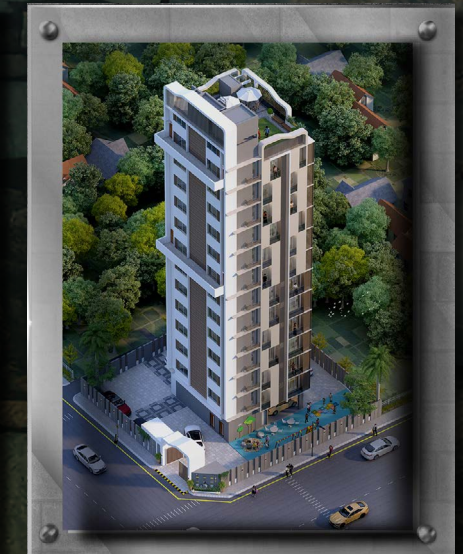
Our Laurels and upcoming *Landmarks*



Equinox Emerald
8B Bhabanath Sen Street



Equinox Icon
87B, Shyambazar Street



Equinox Pinnacle Heights
47, Pratapaditya Place



Equinox Pearl
57, Mcleod Street



Equinox Pristina
56, Parnasree Kolkata

Our commitment to creativity, functionality, and sustainability has earned us a reputation for excellence. We believe in transforming spaces into experiences.

Equinox Pristina has been envisioned keeping in mind some facets and aspects that are essential for a perfect bonding with Nature. With the changing lifestyle and aspirations of the people residing in Parnasree, gated lifestyle communities with modern facilities are in demand

Parnasree offers Metro connectivity all round greenery and high Community living standards. Equinox Pristina has limited edition boutique residences complete with all superior facilities. Come ... be a part of it.